

DESCRIPTION

Sandwich® style access door for grease duct or high temperature applications.

BASIC USE

To provide easy access into high temperature air ducts and grease duct systems. This door was designed for applications requiring UL 1978 Listing.

SPECIAL CHARACTERISTICS

- UL 1978 Listed
- Easy to install sandwich design with no special tools required
- Minimal penetration into the duct
- Dramatically reduces installation time
- No welding required
- Grease and air tight
- Meets NFPA 96 Standards
- Union made in the U.S.A.
- Available in a variety of sizes
- Door is completely removable for easy cleaning
- Can be used with all types of duct wrap insulation systems
- No need for any clips
- No need for any drilling
- Unique collapsible handle design for easy installation

TECHNICAL INFORMATION

PANELS

The Ultimate Access Door consists of two layers of 11 gauge steel (also available in Stainless 304). Steel door must be used on steel duct and stainless door must be used on stainless duct.

GASKET

High temperature ceramic board, rated to 2300°. Completely covers the surface of the outer plate

FASTENERS

Two threaded fasteners are welded to the inner door and one fastener in each corner.

TEMPLATE

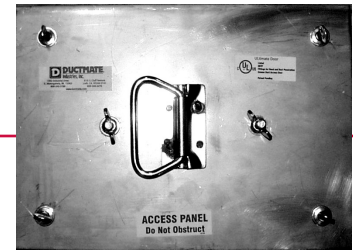
Self adhesive template is provided for the exact size of duct opening required.

UL DOOR INSULATION PLATE

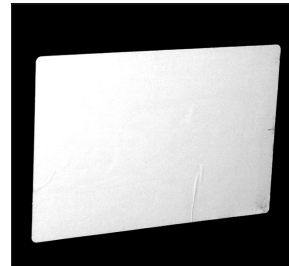
Manufactured from 16 gauge black iron. For use with a wrap system. (Sold separately or as a kit)

UL DOOR INSULATION HARDWARE

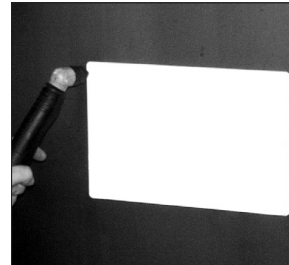
Consists of four 8" extension studs, washers, fasteners, "Do Not Obstruct" Sticker, and installation instructions. (Sold separately or as a kit)



INSTALLATION INSTRUCTIONS



1. Peel backing off template and apply to duct in desired location.



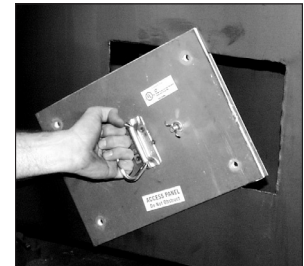
2. Cut around edge of the template.

Be sure to remove all burrs and slug from the cut opening to reduce potential tearing of the gasket during installation and removal of the access door.

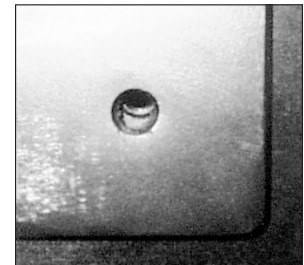


3. Remove the perimeter fasteners from the door assembly and loosen the two center fasteners, but do not remove.

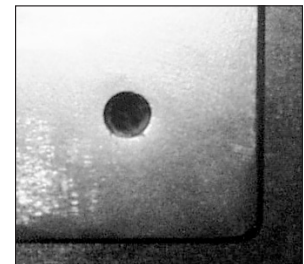
If using a 6" sandwich door, all perimeter fasteners and one center fastener must be removed. Insert the door into the opening at an angle and then center the door and install fasteners.



4. Insert the door into the opening at an angle and then center the door.



- 4a. NOT CENTERED
If you can see the wall of the duct through any of the corner holes, then it is not centered.



- 4b. CENTERED
If you can not see the wall of the duct through any of the corner holes, then it is centered.



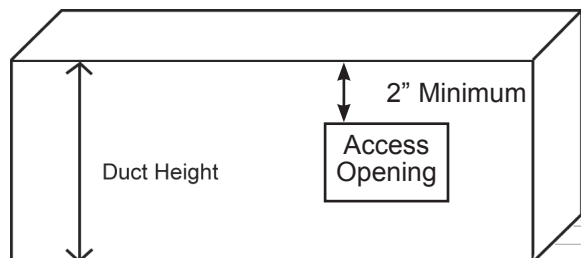
5. Tighten all fasteners.

PACKAGING INFORMATION AND SIZING GUIDELINES

Ultimate Door

- * Insert S4 for Stainless Steel (provided with Stainless Steel hex bolts).
For D1212UL/D1212ULWS Stainless Steel is a special order and may take additional time.
- * Insert BI for Black Iron.
Custom Sizes Available Upon Request - Additional leadtimes may apply

Part #	Description	Opening Size	Door Size	Minimum Duct Height		Weight
D66UL*	UL Door Only	6" x 6"	8" x 8"	13"		25.3 lbs.
D66ULWS*	UL Door with Insulation Kit and 12" x 12" Outer Plate	6" x 6"	8" x 8"	13"		45.0 lbs.
D720UL*	UL Door Only	7" x 20"	9" x 22"	13"		36.0 lbs.
D720ULWS*	UL Door with Insulation Kit and 13" x 26" Outer Plate	7" x 20"	9" x 22"	13"		52.0 lbs.
D106UL*	UL Door Only	10" x 6"	12" x 8"	12"		39.0 lbs.
D106ULWS*	UL Door with Insulation Kit and 16" x 12" Outer Plate	10" x 6"	12" x 8"	12"		63.0 lbs.
D1010UL	UL Door Only	10" x 10"	12" x 12"	17"		57.0 lbs.
D1010ULWS*	UL Door with Insulation Kit and 16" x 16" Outer Plate	10" x 10"	12" x 12"	17"		70.0 lbs.
D128UL*	UL Door Only	12" x 8"	14" x 10"	14"		55.9 lbs.
D128ULWS*	UL Door with Insulation Kit and 18" x 14" Outer Plate	12" x 8"	14" x 10"	14"		70.0 lbs.
D1212UL*	UL Door Only	12" x 12"	14" x 14"	19"		24.01 lbs.
D1212ULWS*	UL Door with Insulation Kit and 18" x 18" Outer Plate	12" x 12"	14" x 14"	19"		43.56 lbs.
D1612UL*	UL Door Only	16" x 12"	18" x 14"	18"		25 lbs.
D1612ULWS*	UL Door with Insulation Kit and 22" x 18" Outer Plate	16" x 12"	18" x 14"	18"		54.68 lbs.
D1814UL*	UL Door Only	18" x 14"	20" x 16"	20"		48.0 lbs.
D1814ULWS*	UL Door with Insulation Kit and 24" x 20" Outer Plate	18" x 14"	20" x 16"	20"		68.0 lbs.
D2020UL*	UL Door Only	20" x 20"	22" x 22"	26"		36.0 lbs.
D2020ULWS*	UL Door with Insulation Kit and 26" x 26" Outer Plate	20" x 20"	22" x 22"	26"		49.0 lbs.
D2418UL*	UL Door Only	24" x 18"	26" x 20"	24"		39.6 lbs.
D2418ULWS*	UL Door with Insulation Kit and 30" x 24" Outer Plate	24" x 18"	26" x 20"	24"		50.63 lbs.
ULINSULKIT	Kit 1: Four 8" extension studs, washers, fasteners, "Do Not Obstruct" stickers, and installation instructions					1.12 lbs.
OP_UL* INSERT SIZE	Kit 2: UL Door Outer Plate					Consult Factory



In order to use the minimum duct height, the door must be installed with it's longest dimension running horizontally along the length of the duct. If the minimum duct height is used, the top of the opening must be 2" from the top of the duct. For every inch over the minimum duct height, the opening can be lowered 1" from the top of the duct.