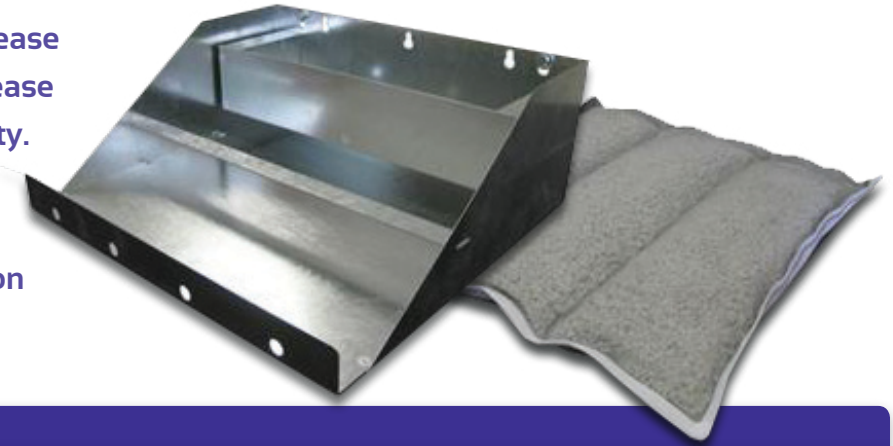


# GREASE CATCHER SYSTEM Installation

The revolutionary G2000 Complete Grease Catcher System provides maximum grease control, rooftop protection and fire safety. It automatically traps and absorbs grease and oils that drip from your kitchen exhaust fan without any work on your part.



## Installation Instructions

1. Line up the **G2000 Grease Catcher tray** - or box, if using box only - under the fan grease spout or drain on the outer duct wall.
2. Mark at least two of the slots openings, three is recommended.
3. Take the included self-tapping screws and install.
4. Loosen screws so the tray and or box can be mounted on screws.
5. After mounting tray and or box tighten screws.
6. Remove the Box pillow from the plastic bag and insert with screen side up.
7. Remove the Tray pillow from the plastic bag and place pillow vertical in tray, screen side up, so that each pillow section is under one of the three drain holes of the box above.
8. Insert Cross Bar into notches across Tray pillow.