

DESCRIPTION

Weld on style access door for grease duct or high temperature applications.

BASIC USE

To provide easy access into high temperature air ducts and grease duct systems. This door was designed for applications requiring UL 1978 Listing.

SPECIAL CHARACTERISTICS

- UL 1978 Listed
- Available with optional hinge
- No special tools to remove
- Minimal penetration into the duct
- Dramatically reduces installation time
- Grease and air tight
- Meets NFPA 96 Standards
- Union made in the U.S.A.
- Available in a variety of sizes
- Can be used with all types of duct wrap insulation systems
- No need for any clips
- No need for any drilling
- Unique collapsible handle design for easy installation
- Top plate is completely removable for easy cleaning

TECHNICAL INFORMATION

PANELS

The ULTIMATE II WELD ON access door consists of two layers of 11 gauge steel (also available in stainless 304). Steel door must be used on steel duct and stainless door must be used on stainless duct.

GASKET

High temperature ceramic board, rated to 2300°.

FASTENERS

Zinc plated fasteners.

TEMPLATE

Self adhesive template is provided for the exact size of duct opening required.

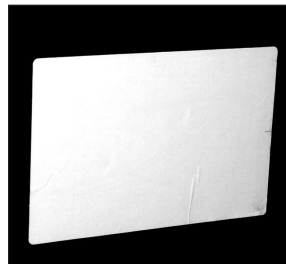
UL DOOR INSULATION OUTER PLATE

Manufactured from 16 gauge black iron. For use with a wrap system. *(Sold separately or as a kit)*

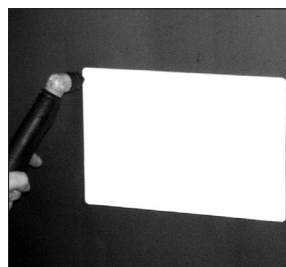
UL DOOR INSULATION HARDWARE

Consists of four 8" extension studs, washers, fasteners, "Do Not Obstruct" Sticker, and installation instructions. *(Sold separately or as a kit)*

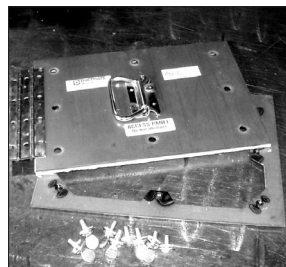
INSTALLATION INSTRUCTIONS



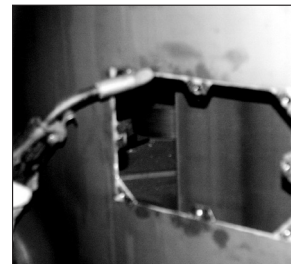
1. Peel backing off template and apply to duct in desired location.



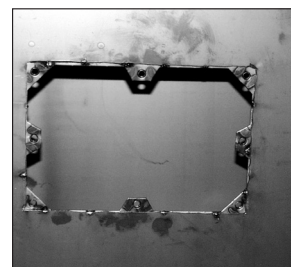
2. Cut around edge of the template.



3. Remove the fasteners and separate door from frame.



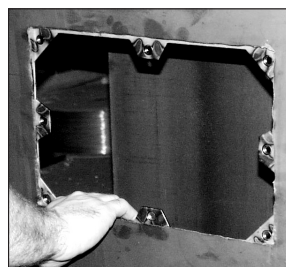
5. Attach with tack welds 2" apart.



6. Correctly installed frame.



7. Install the fasteners with washers. For hinged door, position hinge on duct wall and plug weld.



4. Center the frame around the opening.



- * If using the frame on the outside of the duct, a continuous liquid tight weld is required. Care should be taken to not warp the frame when welding.

PACKAGING INFORMATION AND SIZING GUIDELINES

Ultimate Door II

WELD ON

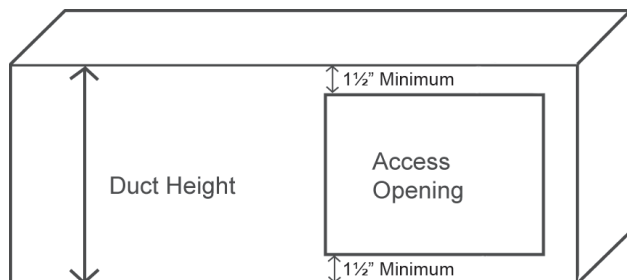
* Insert S4 for Stainless Steel (provided with Stainless Steel hex bolts).

* Insert BI for Black Iron.

Items in **Bold** refer to hinged doors.

Custom Sizes Available Upon Request - Additional leadtimes may apply

Part #	Description	Opening Size	Door Size	Minimum Duct Height		Weight
DW66UL* DWH66UL*	UL Door Only	6" x 6"	8" x 8"	9"		20.0 lbs. 23.0 lbs.
DW66ULWS* DWH66ULWS*	UL Door with Insulation Kit and 12" x 12" Outer Plate	6" x 6"	8" x 8"	9"		26.7 lbs. 42.5 lbs.
DW106UL* DWH106UL*	UL Door Only	10" x 6"	12" x 8"	9"		38.1 lbs. 32.5 lbs.
DW106ULWS* DWH106ULWS*	UL Door with Insulation Kit and 16" x 12" Outer Plate	10" x 6"	12" x 8"	9"		34.95 lbs. 56.5 lbs.
DW1010UL* DWH1010UL*	UL Door Only	10" x 10"	12" x 12"	13"		40.0 lbs. 40.9 lbs.
DW1010ULWS* DWH1010ULWS*	UL Door with Insulation Kit and 16" x 16" Outer Plate	10" x 10"	12" x 12"	13"		53.0 lbs. 55.0 lbs.
DW128UL* DWH128UL*	UL Door Only	12" x 8"	14" x 10"	11"		46.22 lbs. 41.3 lbs.
DW128ULWS* DWH128ULWS*	UL Door with Insulation Kit and 18" x 14" Outer Plate	12" x 8"	14" x 10"	11"		53.0 lbs. 53.7 lbs.
DW1814UL* DWH1814UL*	UL Door Only	18" x 14"	20" x 16"	17"		32.6 lbs. 34.0 lbs.
DW1814ULWS* DWH1814ULWS*	UL Door with Insulation Kit and 24" x 20" Outer Plate	18" x 14"	20" x 16"	17"		53.0 lbs. 52.0 lbs.
DW2020UL* DWH2020UL*	UL Door Only	20" x 20"	22" x 22"	23"		34.95 lbs. 36.9 lbs.
DW2020ULWS* DWH2020ULWS*	UL Door with Insulation Kit and 26" x 26" Outer Plate	20" x 20"	22" x 22"	23"		34.95 lbs. 37.0 lbs.
DW2418UL* DWH2418UL*	UL Door Only	24" x 18"	26" x 20"	21"		23.5 lbs. 24.3 lbs.
DW2418ULWS* DWH2418ULWS*	UL Door with Insulation Kit and 30" x 24" Outer Plate	24" x 18"	26" x 20"	21"		36.0 lbs. 36.8 lbs.
ULINSULKIT	Kit 1: Four 8" extension studs, washers, fasteners, "Do Not Obstruct" stickers, and installation instructions					1.12 lbs.
OP_UL* INSERT SIZE	Kit 2: UL Door Outer Plate					Consult Factory



Unlike the ULtimate Sandwich® style door, the ULtimate II weld on door requires minimal additional clearance. The duct only needs to be large enough to accommodate the frame and satisfy the NFPA 96 Standard. Although the frame only extends 1" past each side of the opening, the NFPA 96 standard requires a minimum of 1.5" clearance between the opening and all seams or edges. Therefore, a minimum of 1.5" clearance is recommended on each side of the opening. In order to use the minimum duct height, the door must be installed with its longest dimension running horizontally along the length of the duct.