

Access Armor Duct Access Door

Installation Instructions

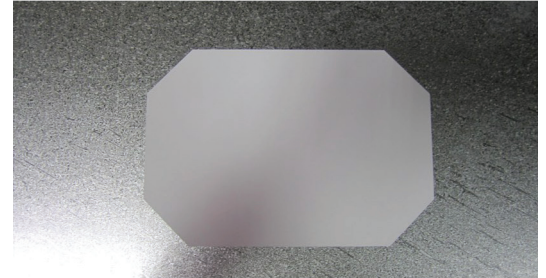
Pre-installation:

Make sure there are no obstructions that will be in the way of the mounting area on the duct such as electric boxes, conduit, brackets, etc.

Installation:

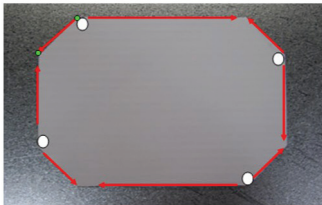
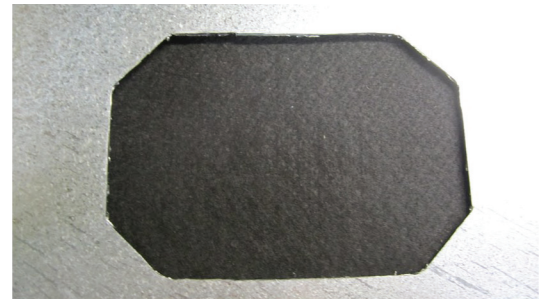
1. Remove backing from the supplied template and place the **Access Armor Duct Access Door** on duct in desired location.

(1)



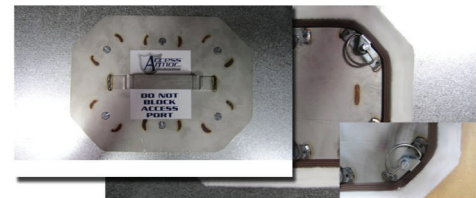
2. Closely cut duct around the perimeter of template and remove portion of duct. We recommend using a small jig-saw blade #30076 or conventional sheet metal nibbler. **You may want to drill a pilot hole in the 4 corners to make cutting easier.**

(2)



3. Center and place Access Armor Duct Door into opening, being sure that all D-ring fasteners are in the "open" / counter-clockwise position. **Note: De-burring perimeter of duct opening is recommended to ensure proper fitting for access door and to reduce risk of injury.**

(3)



↑ OPEN

4. Once in place, turn fasteners clockwise to compress Access Armor Door to duct, creating an airtight seal. This completes your installation.

(4)



↓ CLOSED